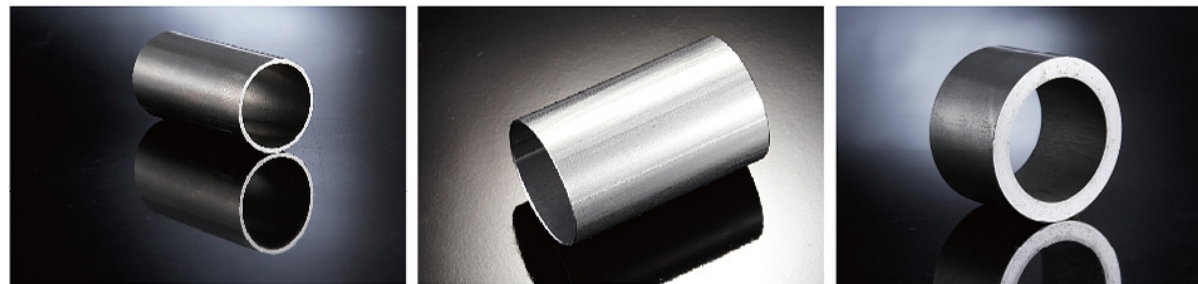


Specifications / Model			SA-80CNC-ST
Cutting Capacity	Round Tube (mm)	Single Tube	Ø15 ~ Ø80
		Dual Tubes	Ø15 ~ Ø40
Feeding Capacity	Feeding Length (mm)/Stroke		6 ~ 1000
	First Crop (mm)		12 ~ 60
	Last Crop (mm)		75 + α
Main Machine	Blade	Size (mm)	Ø275 ~ Ø360
		Cooling	Water Soluble Cooling Lubricating Oil, Auto Circulation, Pump 1/2HP(*)
	Cutting Head	Spindle Motor	5HP , 4Poles
		RPM	25-180
	Feeding Way		Servo Drive
	Chip Disposal		Automatic Chip Conveyor
	Hydraulic System	Motor	2HP , 4Poles
Pressure (Kg/cm ²)		50	
Feeding System	Servo Motor	Positive Feeding or Gripper Feeding	
Loading Magazine (M6)	Standard Width (mm)		800
	Standard Capacity (Kg)		1700
	Material Length (mm)		3000 ~ 6200
Dimension(mm) (L x W x H)			7210 X 2235 X 1950
Weight (Kg)			3000

(*) The Oil Mist System is Option.
 Due to continuous improvements and designs; the manufacturer reserves the right to modify or make any changes of all models without notice.





SA-80CNC-ST

Complete Solution for Tube and Pipe

Double Tubes Cutting Line






www.soco.com.tw

SOCO MACHINERY CO., LTD.

NO.3, JINGKE E. RD., NANTUN DIST.,
 TAICHUNG CITY 40852, TAIWAN
 T : 886-4-23591888 F : 886-4-23592386
 E : sales@soco.com.tw



150731/01E

SA-80CNC-ST

Double Tubes Cutting Line

Automation

- 2 Electric Servo Axis – Feeding and Cutting
- M6 - Automatic loading magazine for tubing up to 6 meters in length
- Automatic single or double tube loading, feeding and cutting
- Automatic separation of working pieces vs. crop cuts
- Positive & Gripper feed

Dynamic Cutting

- Automatic speed variation through entire cut
- Automatic variation for single tube, double tubes or single solid bar

Highest Production

- Suitable for non-stop, 24 hours operation
- Single or Dual Tubes Cutting
- Speed Inverter System

Flexibility and ease of use

- Touch screen system for operation, file editing and storage
- Self-diagnostics and error display on-screen for troubleshooting

Precision

- +/-0.05 mm ~ 0.1 mm length tolerance (single tube cutting)
- Electric servo Feeding
- Electric servo Cutting
- Floating feeding carriage

Superior Design = Longer Blade Life

- Patented backlash eliminating system
- Dual Linear Guide Vertical Slides for the Cutting Head, ensuring smooth cutting and longer blade life.
- High efficiency gearbox with patented brake system
- High pressure blade cooling system

SOCO i2 Controls

- Automatic calculation of dynamic cut speed
- Graphical Interface
- Large file storage DB
- Fast setup time

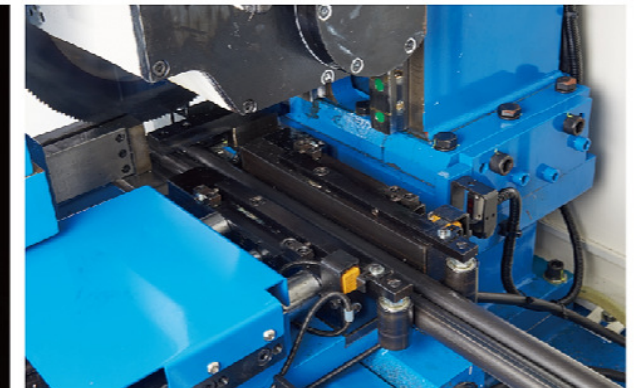
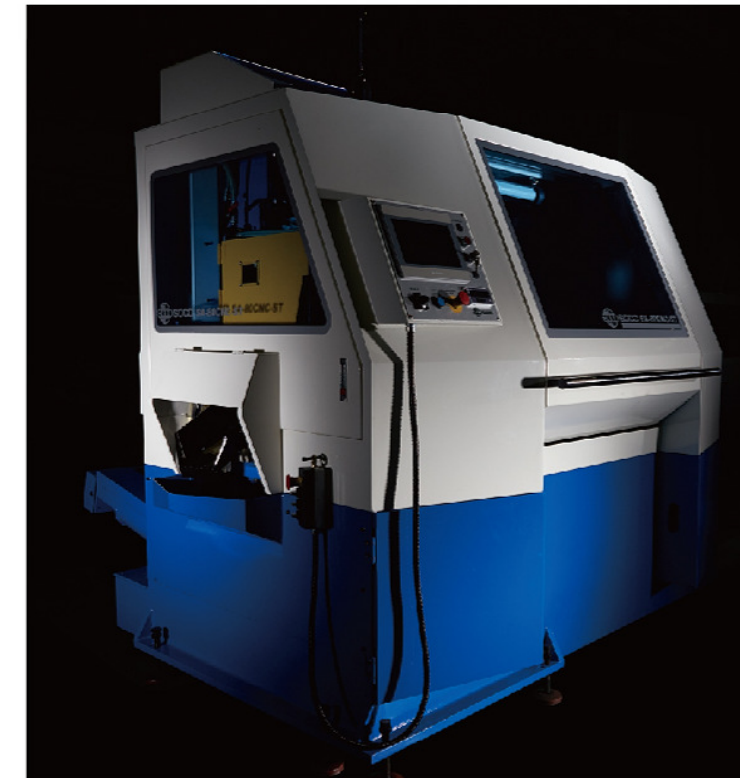
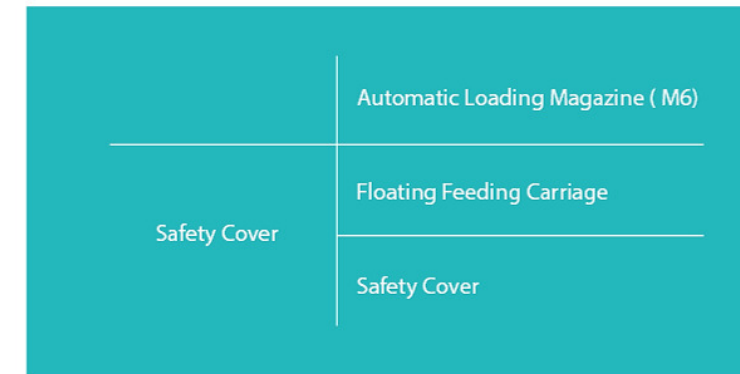
Cutting Efficiency

Example 1

Saw Blade: HSS Saw Blade
 Work Piece : Mild Steel
 O.D. 38.1mm x 4t x 29 mm (Length)
 Per Cut : 2 Tubes
 Cycle Time : 5 +/- 1 sec

Example 2

Saw Blade : HSS Saw Blade
 Work Piece : Mild Steel
 O.D. 25.1mm x 2t x 50 mm (Length)
 Per Cut : 2 Tubes
 Cycle Time : 4 +/- 1 sec



Working Pieces

• SA-80CNC-ST-M8-80
 (8M Loader)