

Specifications		SLT-102-FIBER	
Servo Motors		5 axis	12 axis
Laser Source (Fiber Laser)		700W (Options : 1Kw or 2Kw)	
Cutting Capacity	Round Tube (*)	Ø15 ~ Ø102 mm	
	Rectangular Tube	Diagonal length of section ≤ 102 mm	
	Square Tube	15 x 15 ~ 72 x 72 mm	
	Oval Tube	Diagonal length of section ≤ 102 mm	
	Profiles	By request	
Tube Thickness Cutting Capacity (Standard Type)	Laser Source	700W	1Kw
	Mild Steel	4 mm	6 mm
	Stainless Steel	2.5 mm	4 mm
	Aluminum Alloy	N/A	3 mm
Loading System (Standard Type)	Material Length	3500 ~ 6500 mm	
	Max. Weight of Bundle Tubes	4000 Kg	
Unloading System (Standard Type)	Max. Weight of Working Piece	120 Kg	
	Max. Length of Working Piece	3000 mm	
Gross Weight (Standard Type)	Loading System	3600 Kg	
	Feeding System	3800 Kg	
	Laser Cutting System	2050 Kg	
	Unloading System	1050 Kg	
Utilities Requirement (Standard Type)	Floor Space	1540 x 580 mm	

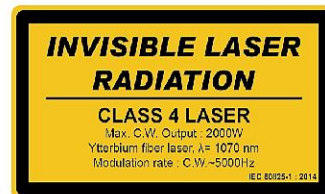
Due to continuous improvements and designs : The manufacturer reserves the right to modify or make any change of all models without notice.

(*) Options :

1. Smaller diameter or sectional length of tube: 9.5 mm minimum
2. Compatibility for tubes with special sectional shapes. (Ellipse, asymmetric, etc.)
3. Able to import different types of file. (Example: .STEP, .IGS.)
4. Maximum length of work piece: 1.5 m, 2 m, 4.5 m or 6 m
5. Different unloading method: Work piece conveyor or fixed platform
6. Scrap conveyor
7. Anti-spatter unit
8. Length of raw material: 3500 ~ 8500 mm
9. 1000W laser source (Min. output: 100W) or 2000W laser source (Min. output power: 200W)
10. Weld-seam detector
11. SMS system
12. Ultrasonic sensor: Recommended for rectangular tubes of H/W < 1.5
13. Aluminum and aluminum alloy tubes for 1000W

Standards in compliance:

- CE standards.
- Part 1040.10 of the Code of Federal Regulation 21 (21 CFR Part 1040.10) of the United States, except those specified in Laser Notice No. 50 which is issued by the CDRH on June 24, 2007.
- IEC 60825-1: 2014 (Safety of laser products - Part 1: Equipment classification and requirements.)



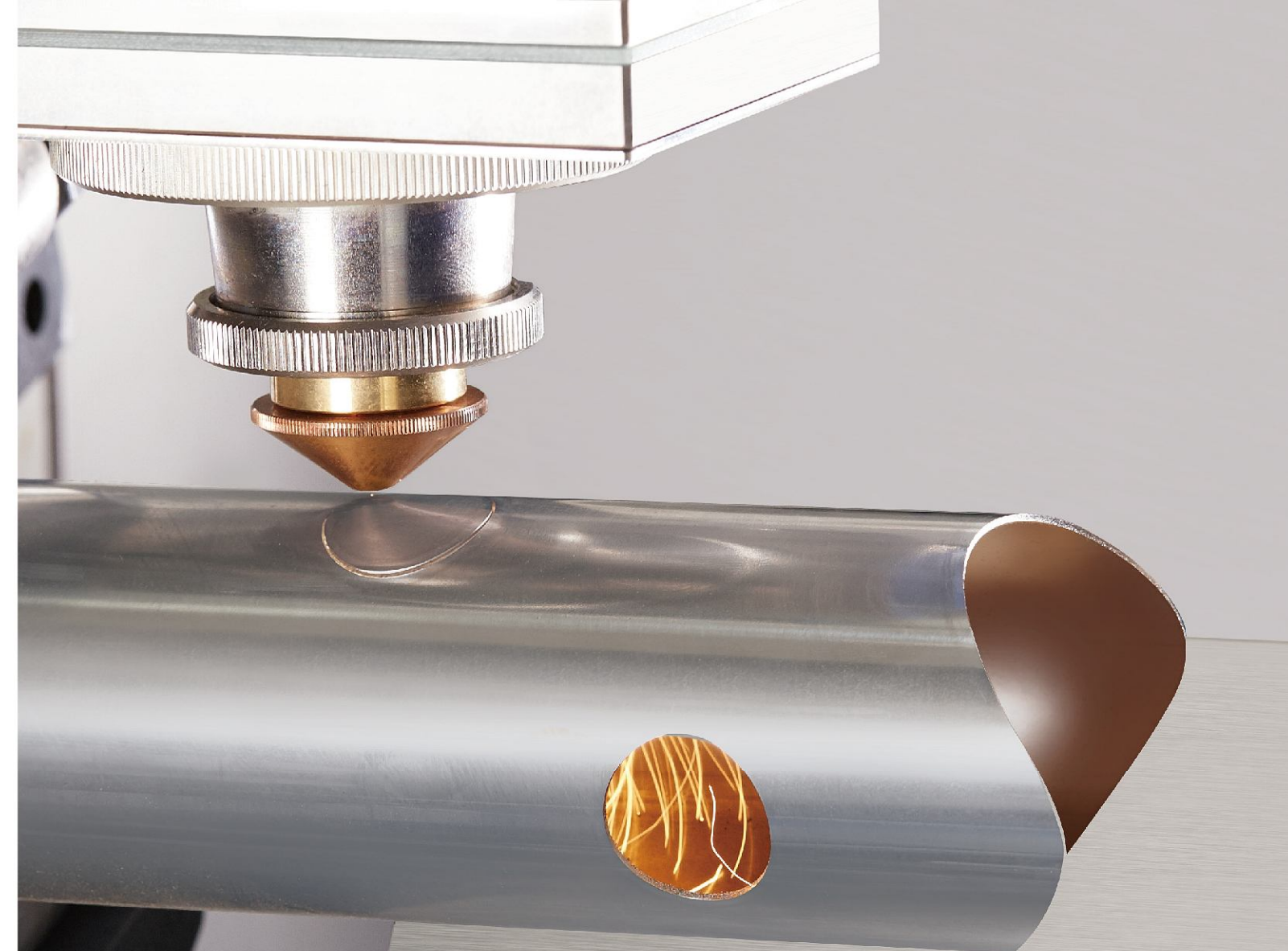
www.soco.com.tw

SOCO MACHINERY CO., LTD.

NO.3, JINGKE E. RD., NANTUN DIST.,
TAICHUNG CITY 40852, TAIWAN
T : 886-4-23591888 F : 886-4-23592386
E : sales@soco.com.tw



180831/01E



SLT-102 FIBER

Laser Cutting Line
For Tubes and Profiles

Complete Solution for Tube and Pipe



SLT-102-FIBER

SOCO introduces its newest generation in tube and profile processing technology – the Fiber Laser Cutting System “SLT-102-FIBER”. With over 30 years of experience in design and manufacturing experience in tube cutting technology, SOCO specializes in solutions for the Tube and Pipe industries, and the new Fiber Laser Cutting Line is the ultimate solution for joining multiple machining processes in one system for maximum flexibility, automation and performance.

Suitable for :

- Round Tube:
- Square Tube:
- Rectangular Tube
- Oval Tubes
- L-shaped profiles
- C-shaped profiles
- Mild Steel, Stainless Steel and Aluminum materials

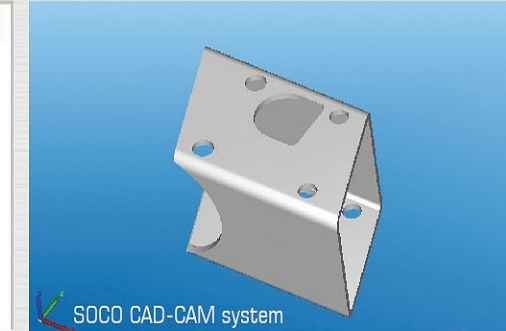
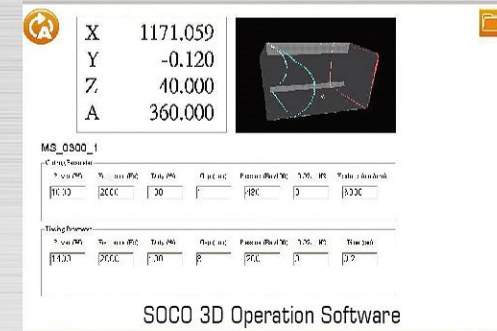
Automation Working Processes:

1. Automatic Tube Bundle Loading
2. Automatic Material Alignment
3. Automatic Feeding and Rotation
4. Fiber Laser Cutting
5. Unloading

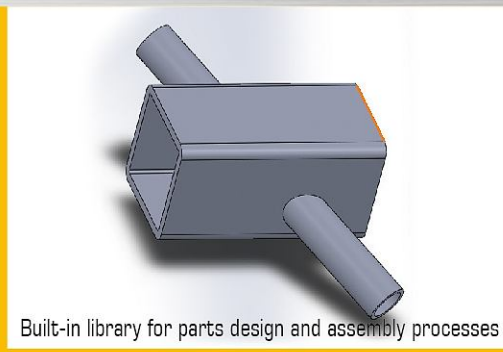
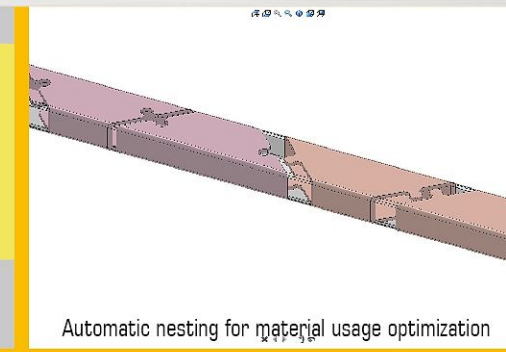
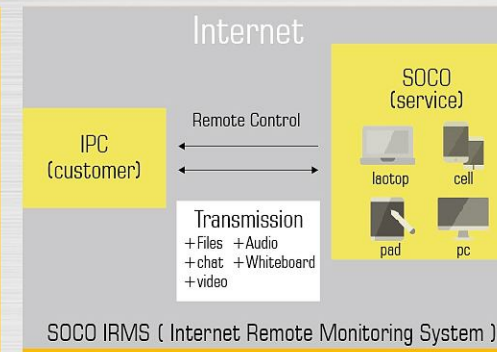
SLT-102-FIBER Standard Features :

- Typical Laser Processes :
 1. Straight & Angle Cutting
 2. Slotting
 3. Marking
 4. Notching
 5. Hole Making
- Capacity up to O.D. 102 mm
- 700W Laser Source (Standard), 1Kw and 2Kw Laser Source (Option)
- Max. Lengths of working piece is 3m (Standard), and 1.5m, 2m, 4.5m or 6m is optional (longer lengths by request)
- Max. Wall thickness up to 6.0mm (Mild Steel with 1Kw Laser Source)
- Automatic Bundle Loading System with Material Alignment
- Multi-Axis CNC Controls with Touch Screen Interface
- SOCO CAD-CAM system for Tubes and Profiles with built-in Nesting
- SOCO i2 (Intelligent interface) 3D operation software
- Cutting for Round, Square, Rectangle and Various Profile Shapes
- Enclosed Workstation for maximum safety
- Automatic Distance Control
- Laser Resonator Cooling and Fume extraction systems
- Scanning & Measuring of material before cutting

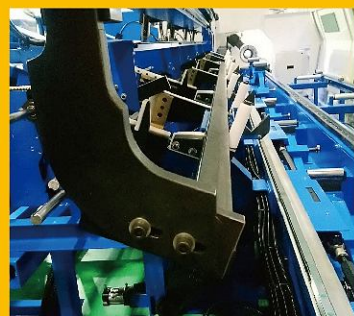
Laser Samples



Advanced Fiber Cutting Technology



Automatic Bundle Loading Magazine



Automatic Material Measuring



Automatic Feeding and Rotation

